



# INSTALLATION



## FLAMIN' SHIFT PEG 4418

**FITS: ALL H-D SHIFT LEVERS - NOT FOR USE WITH KURYAKYN XL FWD CONTROL (P/N 9077, 9078, 9080 AND 9081)**

### PARTS INCLUDED

- 1 Flamin' Shift Peg
- 1 5/16-24 x 1 Hex Head Cap Screw
- 1 Installation Instructions

Please read and understand entire instructions before starting installation.

### THANK YOU FOR CHOOSING KURYAKYN!

**IN ORDER TO PROTECT YOU AND OTHERS FROM POSSIBLE INJURY AND/OR PROPERTY DAMAGE OR LOSS, PLEASE PAY CLOSE ATTENTION TO ALL INSTRUCTIONS, WARNINGS, CAUTIONS AND ATTENTION NOTES REGARDING THE USE AND CARE OF THIS PRODUCT.**

**CAUTION!** This indication alerts you to the fact that ignoring the contents described herein can result in potential injury or material damage.

**ATTENTION!** This indication alerts you to the fact that ignoring the contents described herein may negatively affect product performance and functionality.

### TOOLS SUGGESTED

Combination wrenches, large pliers and a clean rag.

**STRICTLY OBSERVE THE FOLLOWING GUIDELINES IN ORDER TO USE THE PRODUCT PROPERLY AND AVOID POTENTIALLY DANGEROUS ACCIDENTS.**

### PROCEDURE

**STEP 1** Read and understand all steps in the instructions before starting the installation. Park the motorcycle on a hard, level surface and turn off the ignition.

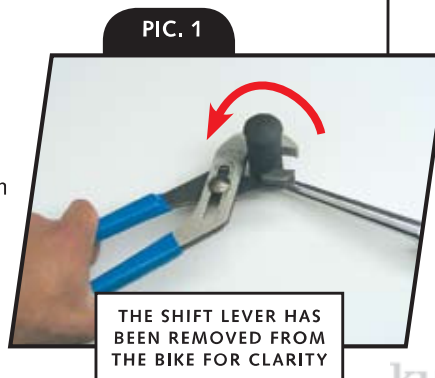
**STEP 2** Remove the existing shift peg. Use large pliers to grab the stock peg; turn the peg counter-clockwise to remove (PIC. 1). The shift lever has been removed from the bike for clarity, it is not necessary to remove the entire lever.

**STEP 3** Thread the 5/16-24 HHCS into the shift lever until it is all the way through the threaded portion of the lever.

**STEP 4** Thread the Flamin' Shift Peg onto the 5/16-24 HHCS as shown in PIC. 2.

**STEP 5** Adjust the position of the Flamin' Shift Peg for comfort and then tighten the 5/16-24 HHCS. Wrap a clean rag over the Flamin' Shift Peg and hold it with the large pliers while you tighten the 5/16-24 HHCS to prevent the peg from turning.

-cont.-



### CUSTOMER SERVICE

877.370.3604 (toll free)

### INSTALLATION QUESTIONS

techsupport@kuryakyn.com  
or call 715.247.2983

### LIMITED WARRANTY

Kuryakyn warrants that any Kuryakyn products sold hereunder, shall be free of defects in materials and workmanship for a period of one (1) year from the date of purchase by the consumer excepting the following provisions:

· Kuryakyn shall have no obligation in the event the customer is unable to provide a receipt showing the date the customer purchased the product(s).

· The product must be properly installed, maintained and operated under normal conditions.

· Kuryakyn makes no warranty, expressed or implied, with respect to any gold plated products.

· Kuryakyn shall not be liable for any consequential and incidental damages, including labor and paint, resulting from failure of a Kuryakyn product, failure to deliver, delay in delivery, delivery in non-conforming condition, or for any breach of contract or duty between Kuryakyn and a customer.

· Kuryakyn products are often intended for use in specific applications. Kuryakyn makes no warranty if a Kuryakyn product is used in applications other than intended.

· Kuryakyn electrical products are warranted for one (1) year from the date of purchase by the consumer. Components of Kuryakyn products containing L.E.D.s will be warranted for defects in materials and workmanship for 3 years from the date of purchase.

· Kuryakyn makes no warranty of any kind in regard to other manufacturer's products distributed by Kuryakyn. Kuryakyn will pass on all warranties made by the manufacturer and where possible, will expedite the claim on behalf of the customer, but ultimately, responsibility for disposition of the warranty claim lies with the manufacturer.

### ABOUT OUR CATALOG

You'll find all our innovations for H-D, GL and Metric Cruisers in our annual catalogs. Order online today—select the "CATALOGS" icon. Each Kuryakyn® product comes with a Proof-of-Purchase good for a complimentary catalog. Details in packaging.

Be sure to ask your local dealer about other Kuryakyn® products, the motorcycle parts and accessories designed for riders by riders.

©2005 Kuryakyn USA® All Rights reserved.



**CAUTION!** Avoid damage to the motorcycle. Protect chrome surfaces with a soft cloth or blanket.

**ATTENTION!** It is the installer's responsibility to ensure that all of the fasteners (including pre-assembled) are tightened before operation of the motorcycle. Kuryakyn will not warranty components lost due to improper installation. Periodic maintenance may be required.

**CAUTION!** Ensure that the installation of this product does not interfere with the proper operation of the motorcycle before riding.

**Kuryakyn**<sup>®</sup>

PIC. 2



*Ride On!*

PAGE

**2**

**FLAMIN' SHIFT PEG**

**INSTALLATION**