






TRAILER HITCH for FLHTCUTG & FLHXXX

7653

THANK YOU FOR CHOOSING KÜRYAKYN!


PROTECT YOURSELF AND OTHERS FROM POSSIBLE INJURY AND/OR PROPERTY DAMAGE OR LOSS. PAY CLOSE ATTENTION TO ALL INSTRUCTIONS, WARNINGS, CAUTIONS, AND NOTICES REGARDING THE INSTALLATION, USE, AND CARE OF THIS PRODUCT.

 WARNING	THIS INDICATION ALERTS YOU TO THE FACT THAT IGNORING THE CONTENTS DESCRIBED HEREIN CAN RESULT IN POTENTIAL DEATH OR SERIOUS INJURY.
 CAUTION	This indication alerts you to the fact that ignoring the contents described herein can result in minor or moderate potential injury.
 NOTICE	This indication alerts you to the fact that ignoring the contents described herein may negatively affect product performance and functionality or damage the product itself or the product to which it is being attached.

MAKE SURE THE FOLLOWING PARTS HAVE BEEN INCLUDED IN THE KIT:

- 1 Trailer Hitch Receiver Plate
- 1 Drawbar
- 1 Top Clamp
- 1 Hardware Kit Containing:
 - 2 Nut Plates
 - 4 5/16"-18 X 1" Hex Head Cap Bolts
 - 4 5/16" Lock Washers
 - 4 5/16" Flat Washers
 - 4 3/8"-24 X 1-1/4" Hex Head Cap Bolts
 - 4 3/8" Lock Washers
 - 4 3/8" Flat Washers
 - 1 1/4"-20 X 3/8" Hex Head Cap Bolts
 - 1 Hair Pin Clip
 - 1 Hitch Pin
 - 1 Hitch Plug
 - 1 1-7/8" Hitch Ball
 - 1 3/4" Lock Washer
 - 1 3/4"-16 Hex Nut
 - 2 4" Hook and Loop Tape Pieces
- 1 Installation Instructions

REFER TO FIG 1 AND 2 ON PAGE 7

 **NOTICE** **If installing this product for another party, please make sure they receive this copy of the installation instructions so they are aware of the important information contained in them.**

TOOLS SUGGESTED

Set of Combination Wrenches, Socket Set and Ratchet, '09-'10 models will require a T40 Tamper-proof Torx Socket

7653-21HD-0813

-cont.-



CUSTOMER SERVICE

877.370.3604 (toll free)

INSTALLATION QUESTIONS

techsupport@kuryakyn.com
or call 715.247.2983

LIMITED WARRANTY

Kuryakyn warrants that any Kuryakyn products sold hereunder, shall be free of defects in materials and workmanship for a period of one (1) year from the date of purchase by the consumer excepting the following provisions:

- Kuryakyn shall have no obligation in the event the customer is unable to provide a receipt showing the date the customer purchased the product(s).
 - The product must be properly installed, maintained and operated under normal conditions.
 - Kuryakyn makes no warranty, expressed or implied, with respect to any gold plated products.
 - Kuryakyn shall not be liable for any consequential and incidental damages, including labor and paint, resulting from failure of a Kuryakyn product, failure to deliver, delay in delivery, delivery in nonconforming condition, or for any breach of contract or duty between Kuryakyn and a customer.
- Kuryakyn products are often intended for use in specific applications. Kuryakyn makes no warranty if a Kuryakyn product is used in applications other than intended.

• Kuryakyn electrical products are warranted for one (1) year from the date of purchase by the consumer. L.E.D.'S contained in components of Kuryakyn products will be warranted for defects in materials and workmanship for 3 years from the date of purchase where as all other components shall be warranted for one(1) year. This includes, but is not limited to; control modules, wiring, chrome & other components.

• Kuryakyn makes no warranty of any kind in regard to other manufacturer's products distributed by Kuryakyn. Kuryakyn will pass on all warranties made by the manufacturer and where possible, will expedite the claim on behalf of the customer, but ultimately, responsibility for disposition of the warranty claim lies with the manufacturer.

ABOUT OUR CATALOG

For purchasing Kuryakyn® products, you can receive a complete catalog free of charge. Send the Proof-of-Purchase below with your address to: Kuryakyn, P.O. Box 339, Somerset, WI 54025. Please indicate either Accessories Catalog for Harley-Davidson® or GL & Metric Cruisers.

Be sure to ask your local dealer about other Kuryakyn® products, the motorcycle parts and accessories designed for riders by riders.

©2005 Kuryakyn USA® All Rights reserved.

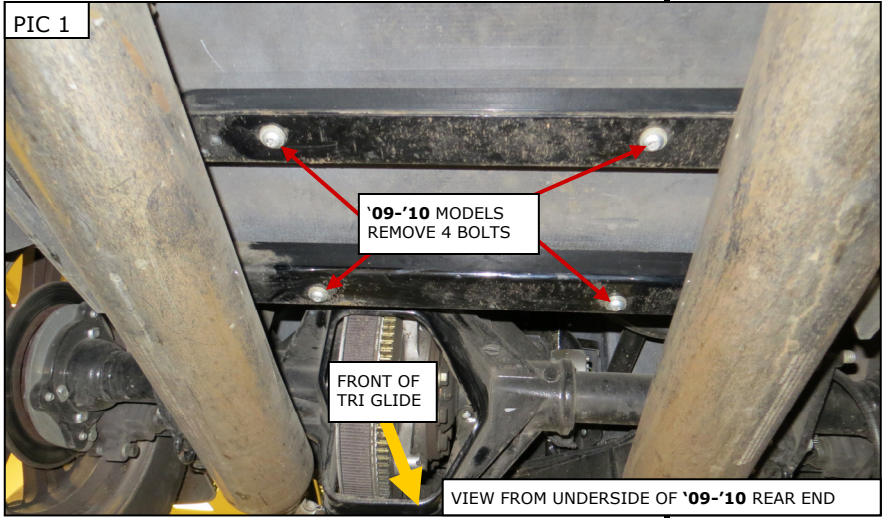


STEP 1

Read and understand all steps in the instructions before starting the installation. Park the motorcycle on a hard, level surface and turn off the ignition. Let the exhaust cool.



You will be working around the exhaust system during the installation. Ensure that the exhaust system has fully cooled to prevent injury.



PROCEDURE FOR '09-'10 MODELS ONLY:

STEP 2

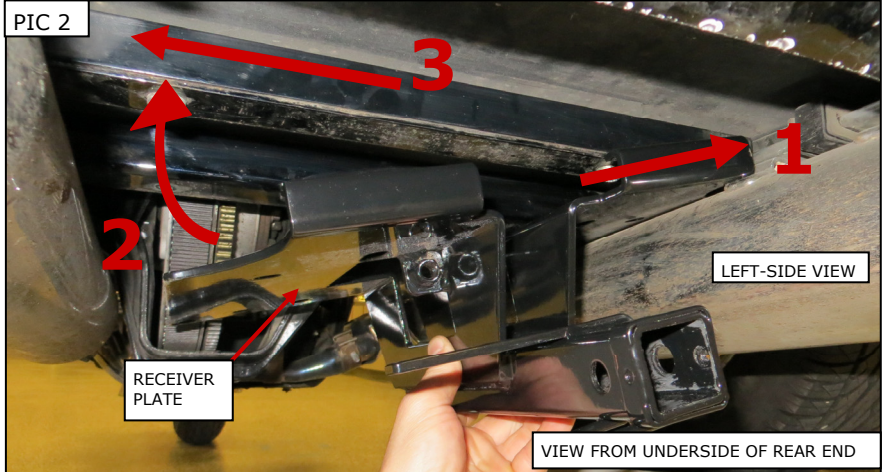
Remove the four tamper-proof T 40 Torx bolts in the front and rear crossmembers. PIC 1 Set them aside, they will not be re-used. Take your time and use the correct tool. **Be Patient and Careful.**

STEP 3

Assemble all four of the included 5/16" Hex Head Bolts. Place a 5/16" Lock Washer and a Flat Washer over the threads as shown in FIG 1 on PAGE 7; set these within arms reach of the underside of the rear end.

STEP 4

Refer to PIC 2. Maneuver one side of the Receiver Plate up and over the muffler (1) until the other side clears the other muffler (2). Slide the Plate over (3) to align the holes in the Plate and crossmember where the stock bolts were removed.



STEP 5

Holding the Receiver Plate in place, attach it to the crossmembers with the 5/16" Bolts assembled in STEP 3. Insert the bolts through the Receiver Plate slots and into the threaded hole in the cross member. FIG 1 Leave all the bolts loose until all four have been started.



It is the installer's responsibility to ensure that all of the fasteners are tightened before operation of the motorcycle. Kuryakyn will not provide warranty coverage on products or components lost due to improper installation or lack of maintenance. Periodic inspection and maintenance are required on all fasteners.

STEP 6

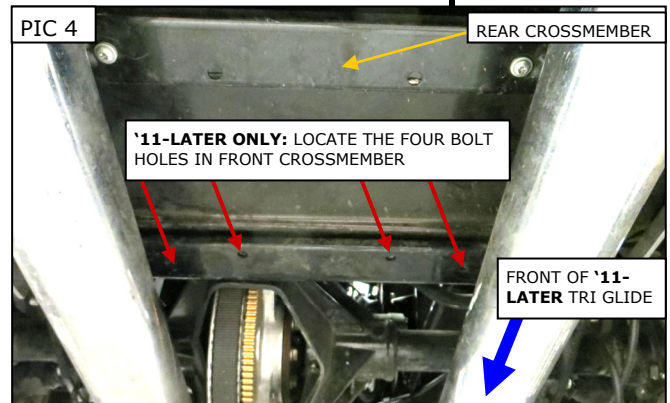
Center the Receiver Plate between the mufflers, tighten the four bolts, and torque them to 18 FT/LBS. **Proceed to STEP 22.**

PROCEDURE FOR '11 AND LATER MODELS ONLY:

NOTE: Familiarize yourself with the included parts and hardware. FIG 2 on PAGE 7 shows the parts you will need to mount the hitch to the trike.

STEP 7

Locate the four holes in the front crossmember. PIC 4



STEP 8

Refer to FIG 2 on PAGE 7. Note the orientation of the Nut Plates and the corresponding holes in the Receiver Plate. On the trike, note the orientation of the holes in the front crossmember. PIC 4

STEP 9

Slide the two Nut Plates into the slot above the front-side of the front crossmember. Align the threaded holes with the holes in the crossmember. Refer to FIG 2.

STEP 10

Assemble all four of the included 5/16" Hex Head Bolts. Place a 5/16" Lock Washer and a Flat Washer over the threads as shown in FIG 2; set these within arms reach of the underside of the rear end.

STEP 11

Maneuver one side of the Receiver Plate up and over the muffler (1) until the other side clears the other muffler (2). Slide the Plate over (3) to align the holes in the Plate and crossmembers. PIC 2

STEP 12

Hook the Receiver Plate over the rear crossmember. FIG 2 Align the holes in the Receiver Plate with the holes in the crossmembers.

STEP 13

Attach the Receiver Plate to the crossmembers with the four included 5/16" bolts (from STEP 10). Leave all the bolts loose for now. FIG 2 and PIC 5

STEP 14

With the Receiver Plate hooked over the rear crossmember and loosely attached to the Nut Plates, slide the Top Clamp into place as shown in PIC 6 and FIG 2. You will not be able to see it, but the top lip of the Top Clamp will rest on the front-side of the rear crossmember.

STEP 15

Align the weldnuts on the Top Clamp with the slots in the Receiver Plate. PIC 7 and FIG 2

STEP 16

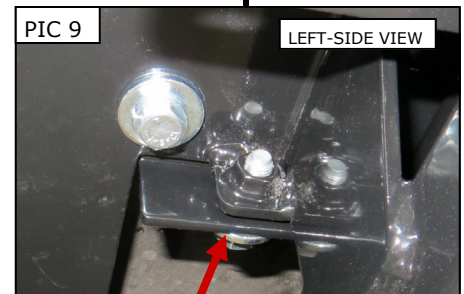
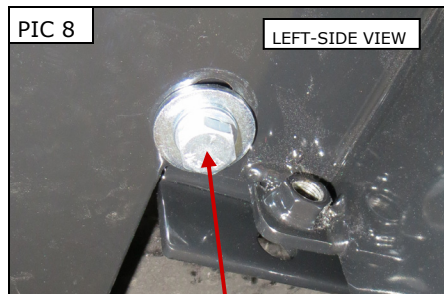
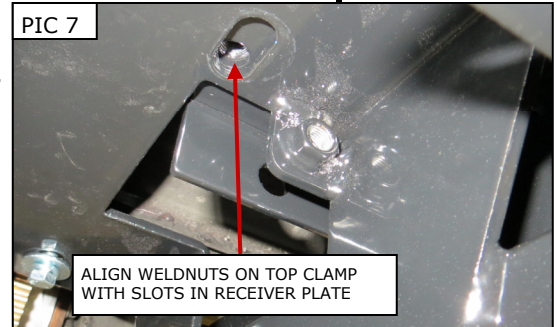
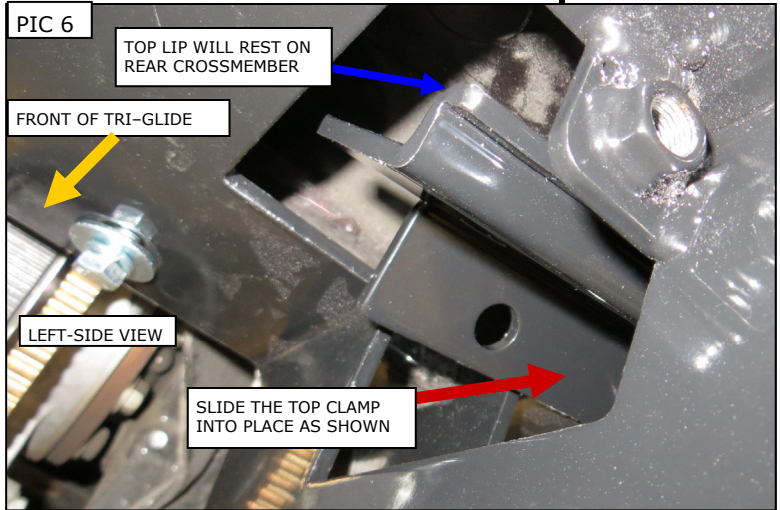
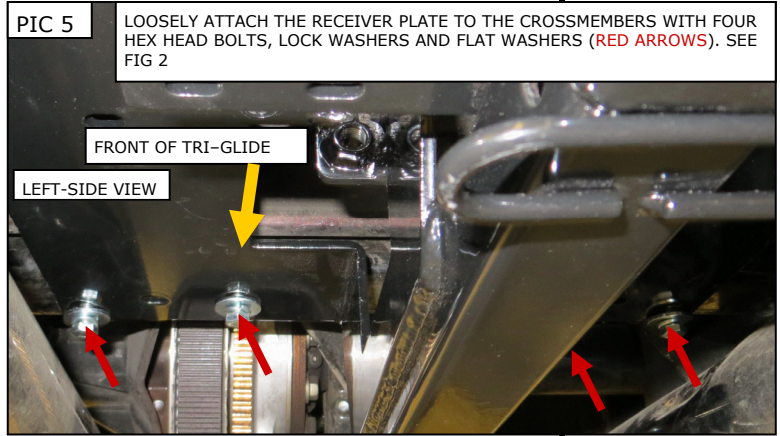
Attach the Receiver Plate to the Top Clamp vertically with the included 3/8" Hex Head Bolts, Lock Washers, and Flat Washers. Leave the bolts loose for now. PIC 8 and FIG 2

STEP 17

Attach the top plate to the receiver horizontally with the remaining 3/8" bolts, lock washers and flat washers as shown in PIC 9 and FIG 2.

STEP 18

Snug the vertical 3/8" bolts installed in STEP 16. Do not fully tighten the bolts. **The Top Clamp should still be able to move a bit.**

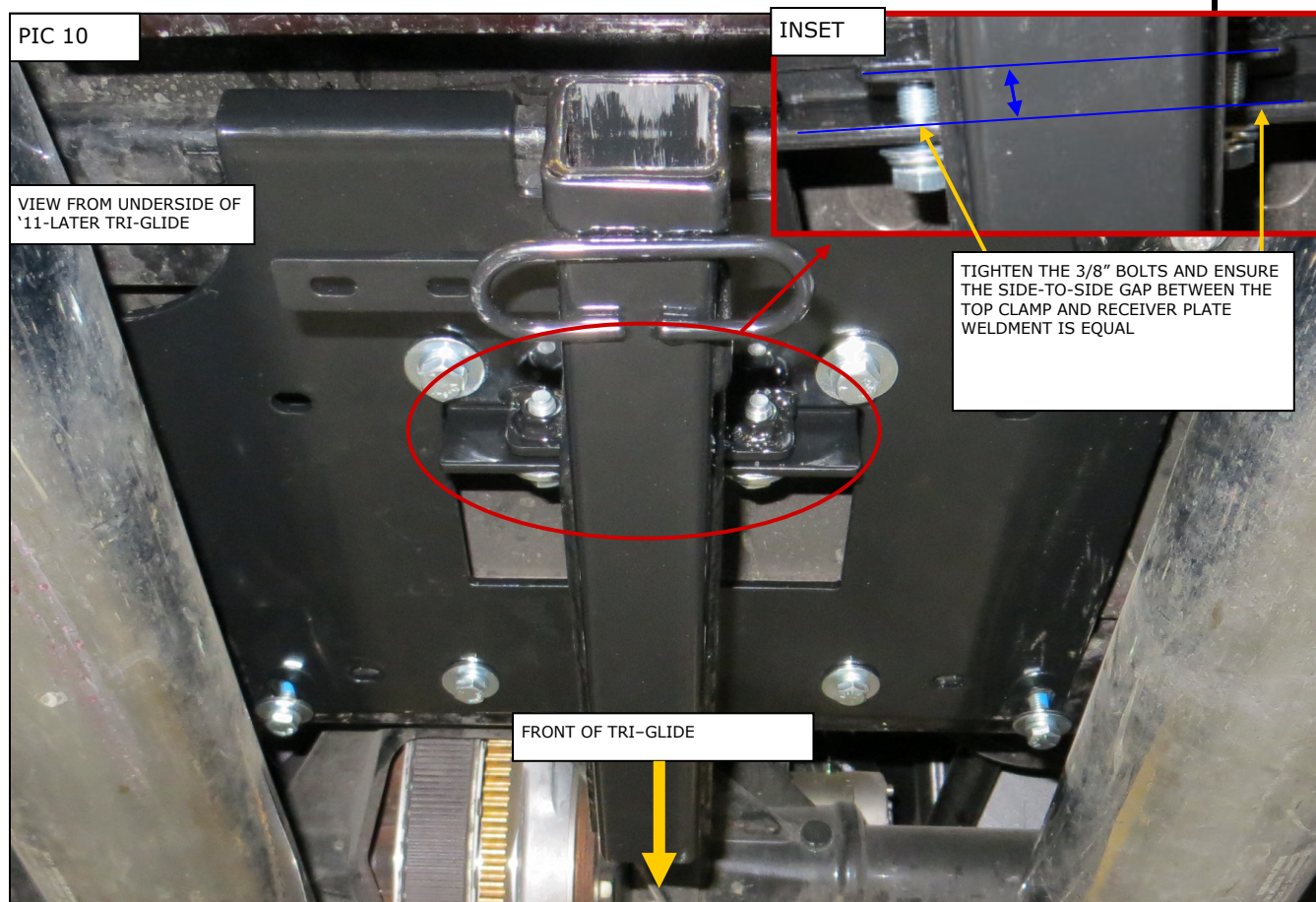


-cont.-

- STEP 19** Tighten the horizontal 3/8" bolts from STEP 17. This will "clamp" the Receiver Plate to the rear crossmember. Ensure the gap between the top clamp and receiver plate weldment is equal. See INSET of PIC 10.
- STEP 20** Tighten the vertical 3/8" bolts (from STEP 18).
- STEP 21** Tighten the four 5/16" bolts (from STEP 13).

NOTICE

It is the installer's responsibility to ensure that all of the fasteners are tightened before operation of the motorcycle. Küryakyn will not provide warranty coverage on products or components lost due to improper installation or lack of maintenance. Periodic inspection and maintenance are required on all fasteners.



STEP 22

Open the trunk door. Position the door cable under the hinge pin in the hinge. PIC 11 Wrap one of the included Hook and Loop Straps, around the hinge arm and cable as shown in PIC 11 Repeat for the other side. Do this to prevent the trunk door from hitting the Hitch Ball when the door is opened. Close the trunk door.

STEP 23

Insert the Drawbar into the Receiver. Secure it with the Hitch Pin and Hair Pin Clip. PIC 12

STEP 24

Install the included 1/4" Hex Head Bolt into the threaded hole in the left-or right-side of the Receiver collar. PIC 12 This will prevent the drawbar from rattling during use.

STEP 25

Insert the threaded stud of the Hitch Ball through the hole in the Drawbar. PIC 13

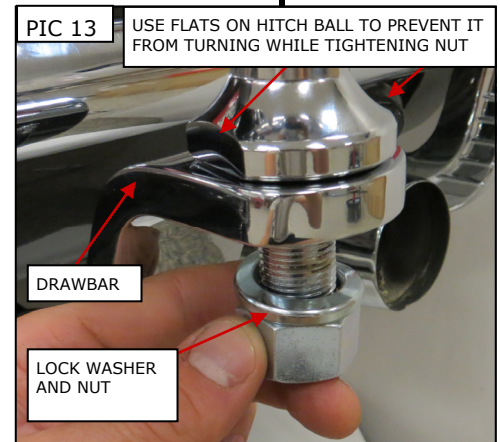
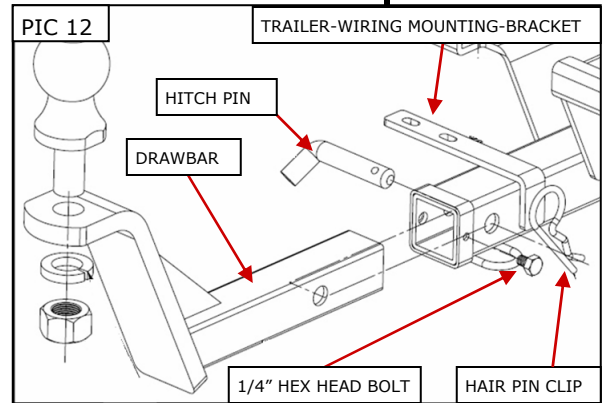
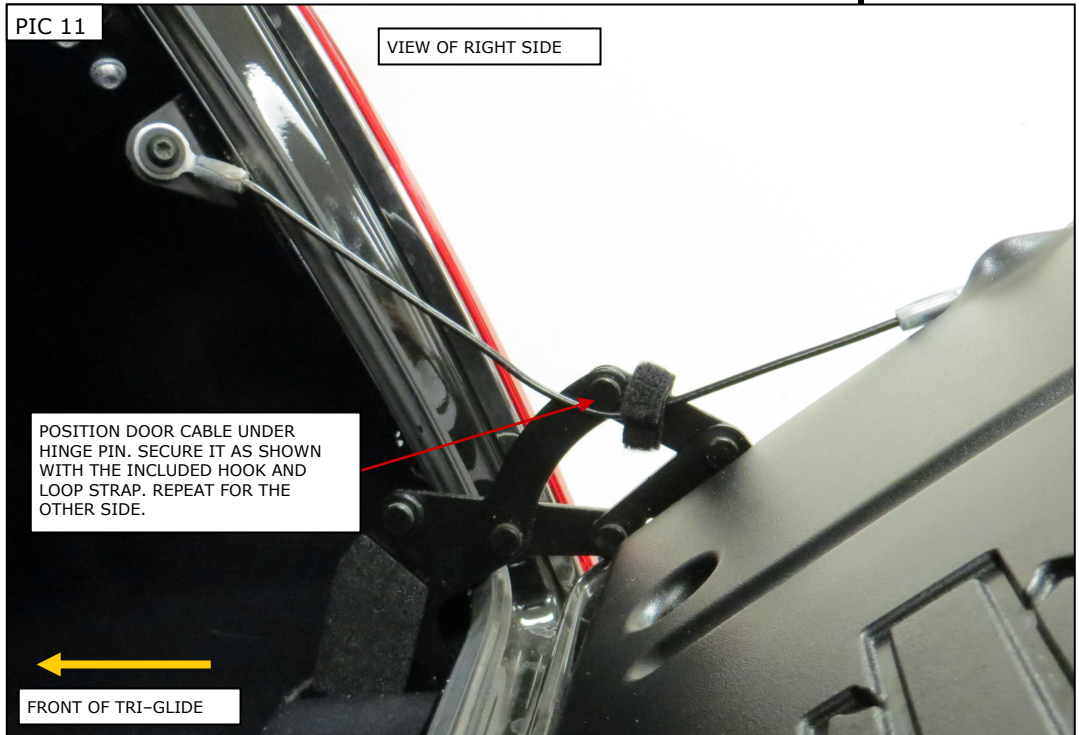
STEP 26

Secure the Hitch Ball with the included 3/4" Lock Washer and Hex Nut. Tighten **VERY** securely. Use a wrench on the flats of the Hitch Ball to prevent it from turning while tightening the Nut. PIC 15

Read the VERY IMPORTANT information on Page 6.

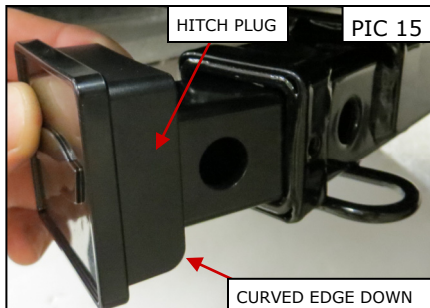
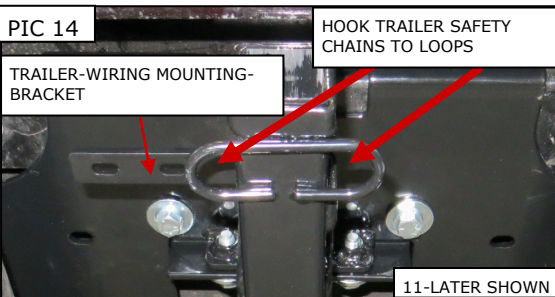
NOTE: Mount your trailer wiring to the trailer-wiring mounting-bracket on the Receiver Plate. PIC 12 and 14 **Küryakyn's 5-Pin Receptacle Kit, P/N 7659, (sold separately) is highly recommended for this application.**

NOTE: Install the included Hitch Plug when the Drawbar has been removed. Remove the 1/4" bolt in the Receiver collar. Slide the Hitch Plug into the Receiver and secure it with the Hitch Pin and Hair Pin Clip. PIC 15



NOTICE

Secure all wiring away from any moving parts, pinch points or extreme heat. Kuryakyn WILL NOT warranty any electrical component that fails due to pinched, crimped, broken, abraded, melted or frayed wires.



-cont.-

NOTICE

Tow only trailers from reputable suppliers, **designed for motorcycle towing**, and with a proven history of good handling.

WARNING

TOWING A TRAILER WITH POOR HANDLING CAN RESULT IN SEVERE INJURY OR DEATH FROM AN ACCIDENT.

NOTICE

Ensure the trailer coupler matches the hitch ball size or style.

When connecting to trailer, always make sure ball is tight on hitch, and that coupler is tight on ball. **Periodically, check these areas for tightness.**

Always use approved safety chains, and have them securely attached. Cross the safety chains under the tongue of the trailer so that the tongue will not drop to the road if it becomes separated from the hitch. Always leave just enough slack so that you can turn without binding. And, **NEVER** allow safety chains to drag on the ground.

Gross Vehicle Weight, tongue weight, tire pressure and suspension settings **MUST COMPLY** with the motorcycle and motorcycle trailer manufacturers recommendations.

WARNING

OVERLOADING YOUR MOTORCYCLE AND/OR TRAILER CAN RESULT IN SERIOUS INJURY OR DEATH!

NOTICE

Towing a trailer requires a certain amount of experience. Before setting out on an extended ride, get to know your rig. Check the trailer hitch, coupler, safety chains, electrical connector, lights and tires. When pulling a trailer with a motorcycle, **extra distance must be allowed for stopping, and a slower speed MUST BE USED when cornering and in inclement weather.** The motorcycle and trailer combination is now longer, **so allow more passing distance.** Reduce speed when traveling downhill (may have to downshift). **USE EXTRA CAUTION AND DON'T EXCEED YOUR RIDING CAPABILITIES.** During the trip, check occasionally to be sure that the load is secure, and that the lights are still working.

The coupler is susceptible to physical damage when trailer is parked. Prop tongue off ground when trailer is not in use. **Carefully inspect coupler for damage or missing parts before each hook-up.**

If trailer sways or bounces while towing, **SLOW DOWN BY REDUCING SPEED GRADUALLY** and **STOP TOWING IMMEDIATELY.** Unless cause can be determined, i.e., shifted load, low tire pressure etc., which can be corrected, **DO NOT RESUME TOWING.**

If motorcycle is involved in an accident or spill, with or without trailer attached, **the hitch and all attachment points and components on the motorcycle must be inspected for physical damage before towing.**

Periodically, inspect hitch to insure it is not bent or cracked and check tightness of all hardware relating to trailer hitch assembly and trailer.

-cont.-

PAGE

6

FIG 1

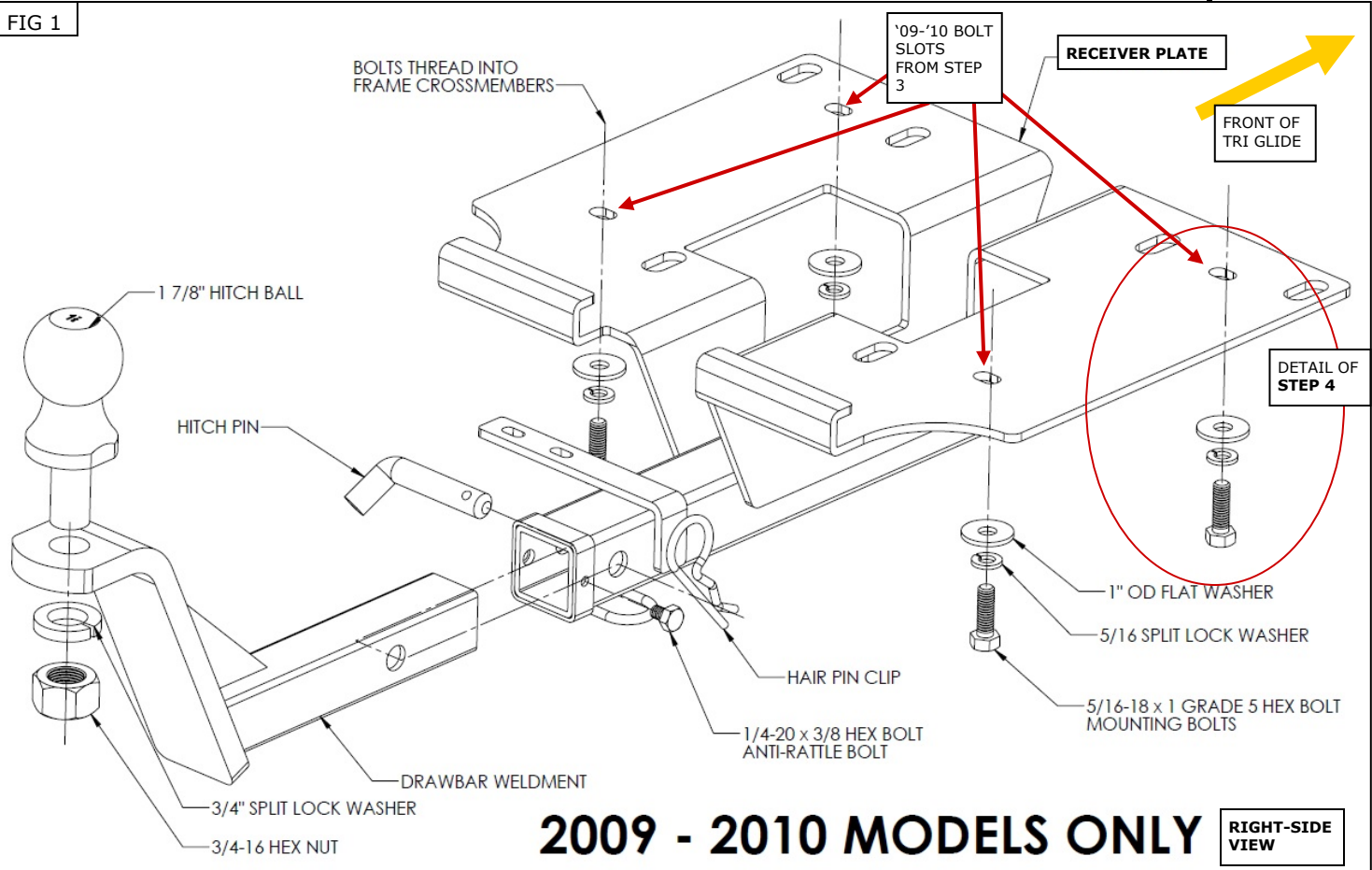
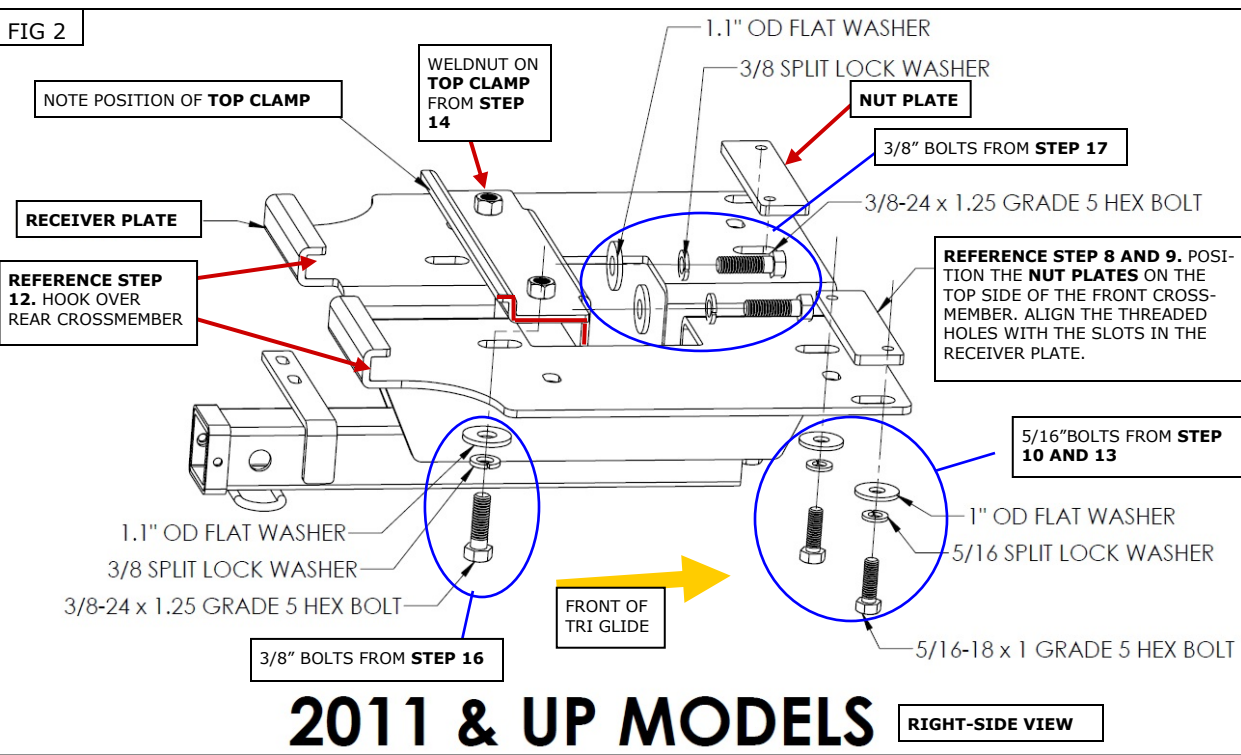


FIG 2



Ride On!